

PROVIDENCE, R. I.
CITY ENGINEER'S OFFICE
STREET LINE DEPT.

Sept. 6. 1888

014252

Providence R.I.
This plat accompanies
our report of this date.

PLAT OF JOSLIN STREET

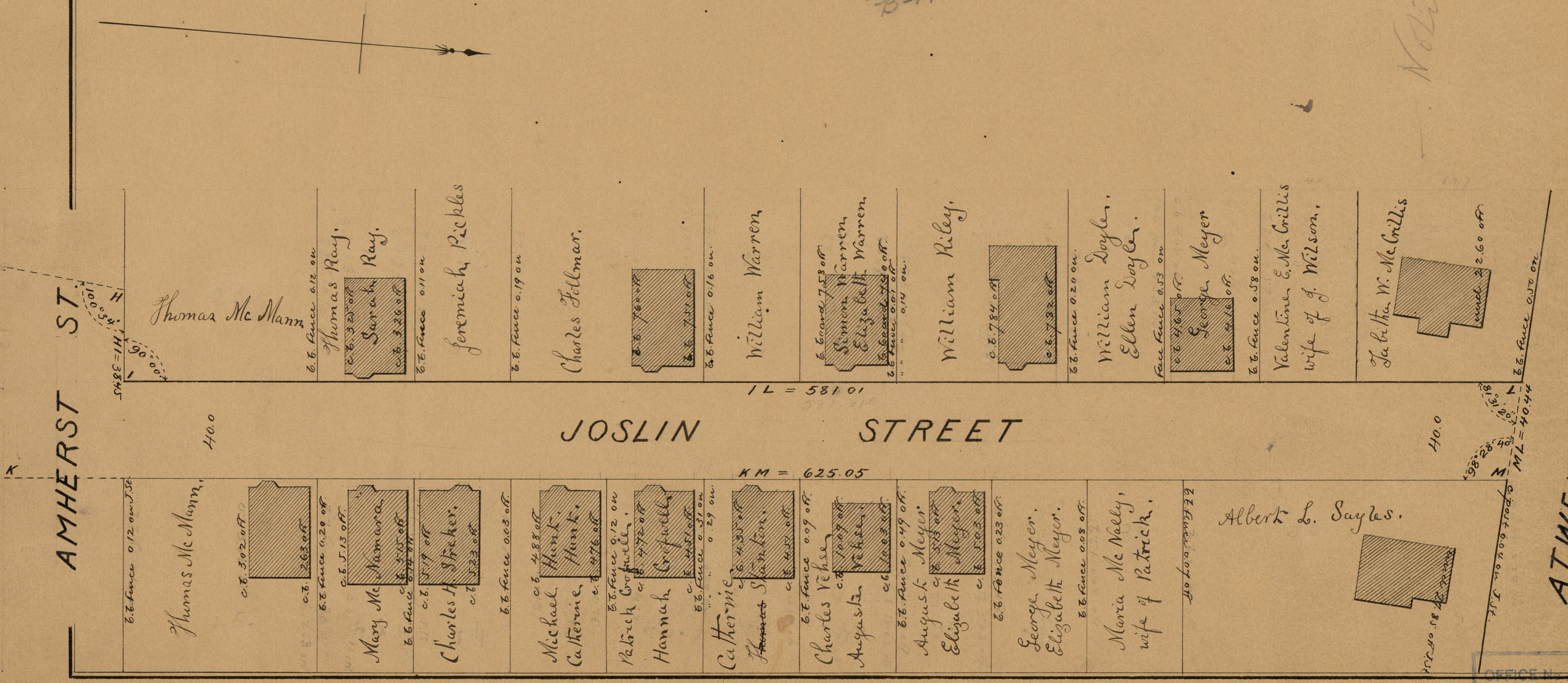
FROM MANTON AVE. TO ATWELLS AVE.

IN THREE SHEETS

SCALE 40 FEET PER INCH

83
B-17

Notice



AMHERST ST.

ATWELLS AVE.

JOSLIN STREET

IL = 581.01

KM = 625.05

OFFICE NO. 9767

83
B-17

DRAWER 83
SHEET B-17